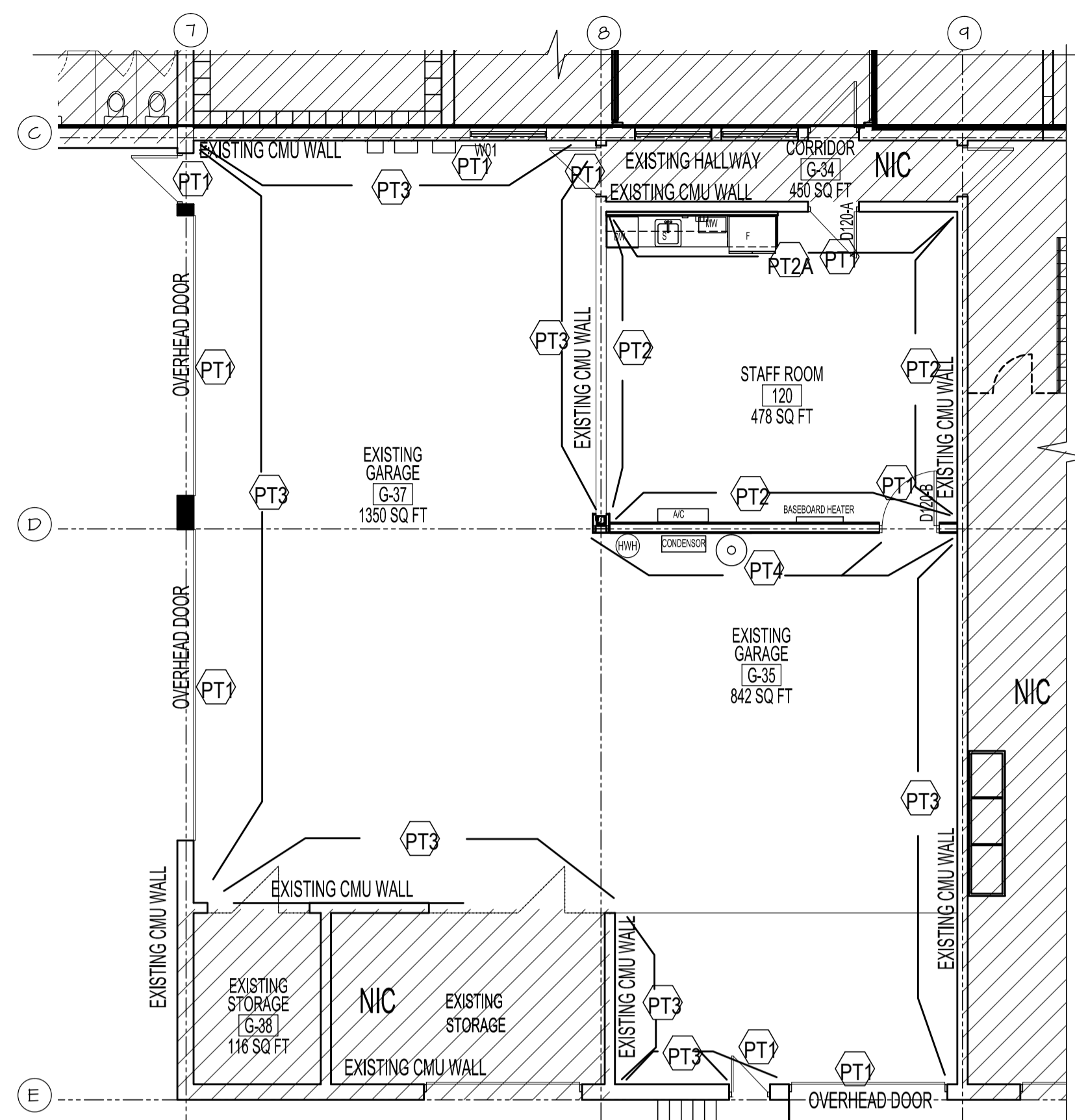


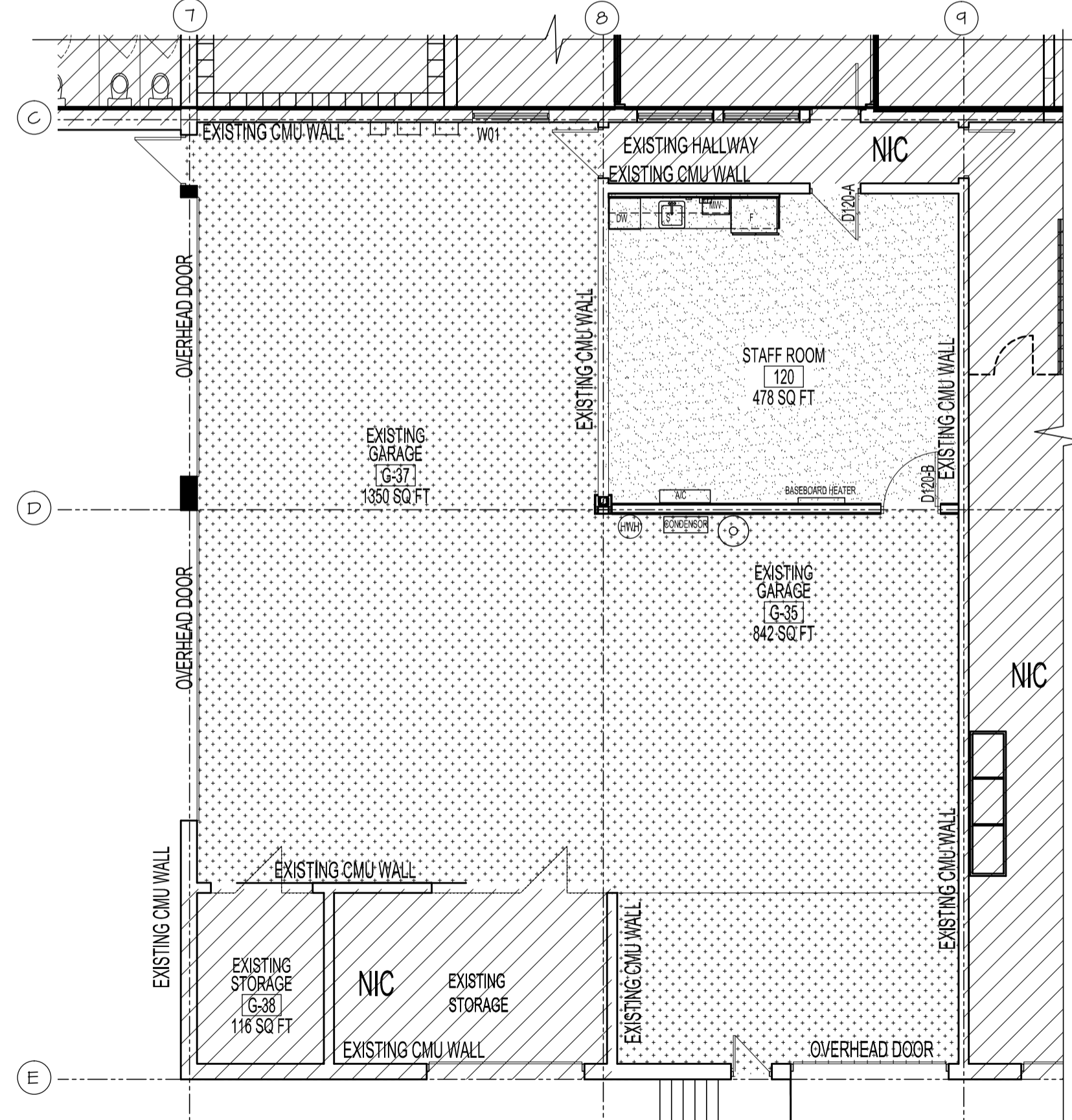
ENLARGED MAIN FLOOR PLAN - REFLECTED CEILING PLAN
SCALE: 1/8"=1'-0"
DESIGN

- 24"x48" RECESSED LED LIGHT
- 24"x48" CGC MILLENIA CLIMAPLUS TILES ON T-RUNNERS-TYP
- NEW 2X2' SUPPLY GRILLE
- EXISTING CEILING UNIT HEATER TO REMAIN
- EXISTING LIGHTING TO REMAIN IN THE GARAGE AREA
- NEW FRESH AIR INTAKE -SEE MECH DWGS



ENLARGED MAIN FLOOR PLAN - WALL FINISH PLAN
SCALE: 1/8"=1'-0"
DESIGN

- WALL FINISH LEGEND:
- (PT1) - DOORS and FRAMES(NEW & EXISTING) & W01
SW 7076 235-C7
COLOUR: CYBERSPACE
GLOSS LEVEL SEMI-GLOSS
 - (PT2) - STAFF ROOM WALL
SW 6231 257-C6
COLOUR: ROCK CANDY
GLOSS LEVEL EGGSHELL
BASEBOARD: 6" RUBBER JOHNSONITE T&G BEDROCK
 - (PT2A) - STAFF ROOM ACCENT WALL
SW 6353 126-C4
COLOUR: CHIVALRY COPPER
GLOSS LEVEL EGGSHELL
BASEBOARD: 6" RUBBER JOHNSONITE T&G BEDROCK
 - (PT3) - GARAGE WALL
SW 7071 235-C1
COLOUR: GRAY SCREEN
GLOSS LEVEL EGGSHELL
NO BASEBOARD
 - (PT4) - NEW WALL AND COLUMN(GARAGE SIDE ONLY)
METAL LINER
COLOUR: SAME AS GARAGE WALL PAINT
- NOTE:
CONTRACTOR TO PROVIDE COLOR SAMPLE FOR CITY APPROVAL



ENLARGED MAIN FLOOR PLAN - FLOOR FINISH LAYOUT
SCALE: 1/8"=1'-0"
DESIGN

- FLOOR FINISH LEGEND:
- STONHARD EPOXY FLOORING -STONTEC SMOKEY MOUNTAIN
 - RUBBER BASE 6" -JOHNSONITE T&G BEDROCK
 - APPROVED ALTERNATE:
• BASF GP500 WITH FLAKES LIMESTONE
 - STONHARD EPOXY FLOORING -STONCLAD GS SILVER GREY OR APPROVED SUBSTITUTE IN ACCORDANCE WITH B7
 - NO BASEBOARD
 - APPROVED ALTERNATE:
• BASF MASTERTOP 1248 CLAD GRAY

NOTE ON EPOXY FLOORING:
- ALLOW FOR SILICA BROADCAST AGGREGATE FINISH. CONTRACTOR TO PROVIDE FINISH SAMPLES TO CONTRACT ADMINISTRATOR FOR APPROVAL AND TO DETERMINE THE FINAL FINISH.

NOTES:

No.	REVISION/DESCRIPTION	BY	DATE
3	ISSUED FOR ADDENDUM #4(ARCH)	AR	NOV 13 2019
2	ISSUED FOR ADDENDUM #3(ARCH)	AR	NOV 12 2019
1	ISSUED FOR ADDENDUM #1	AR	OCT 29 2019
0	ISSUED FOR CONSTRUCTION	AR	SEPT 19 2019

SEAL
ORIGINAL STAMPED BY: NEIL COOPER, NCA
DATE: 2019.09.19

DRAWN	CHECKED	DESIGNED	APPROVED
AR	NC	NC	AR

DATE: 2019.09.19 USER APPROVAL

THE CITY OF WINNIPEG
PLANNING, PROPERTY AND DEVELOPMENT DEPARTMENT
MUNICIPAL ACCOMMODATIONS DIVISION
3-65 GARRY STREET, R3C 4K4

PROJECT
PUBLIC WORKS SOUTH YARD
INTERIOR RENOVATIONS

1539 WAVERLEY STREET BID OPP: 944-2019

Neil Cooper Architect
109-374 River Avenue, Winnipeg, Manitoba R3L 0E4

SHEET TITLE
REFLECTED CEILING PLAN
WALL & FLOOR FINISH LAYOUT

SCALE	PROJECT No:	SHEET No:
AS SHOWN	2018-018	A3-R3